



# The Landmark Bangkok

THE PERFECT PLACE TO REST, MEET, DINE & PLAY

Welcome to **The Landmark Bangkok**

THE PERFECT ADDRESS

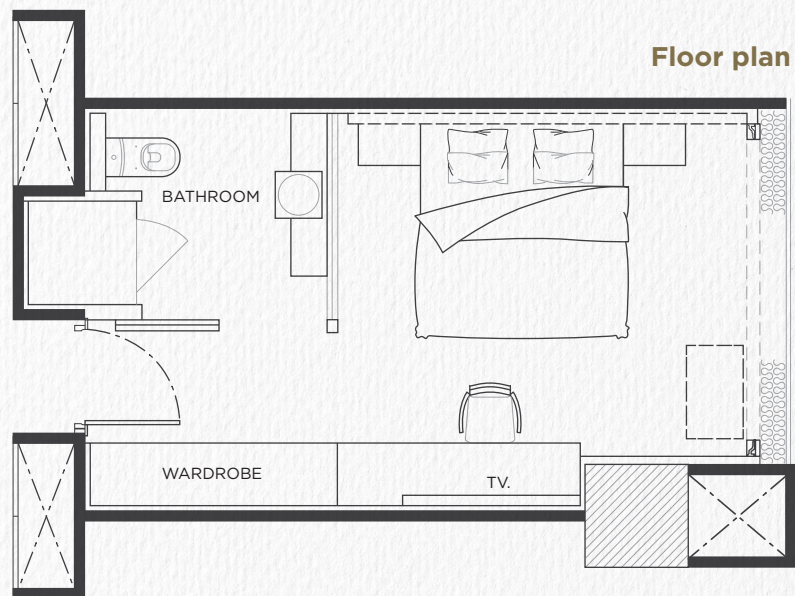
With superb accommodation, exquisite dining and a convenient location,  
there is no better choice when in Bangkok.

LIFESTYLE<sup>SM</sup>

*Preferred*

HOTELS & RESORTS



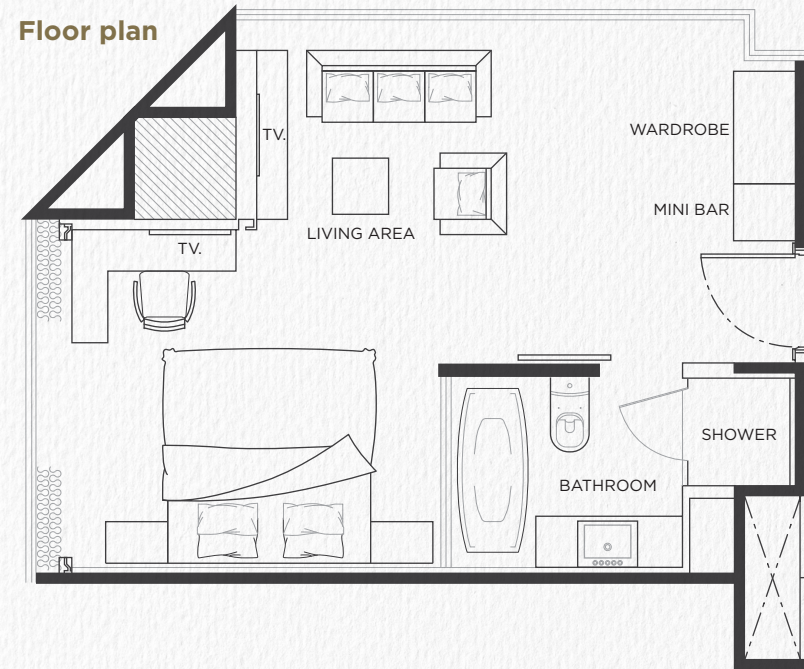


### **Premium Room**

Elegantly decorated with the essence of Thailand, our Premium rooms offer a generous 30sqm of bedroom space and a beautifully equipped marble bathroom. After a busy day, retreat to the comforts of your room and stretch out in the luxurious bed linens of the relaxing king bed. Refresh in the morning under a soothing rain shower and our locally crafted amenities.





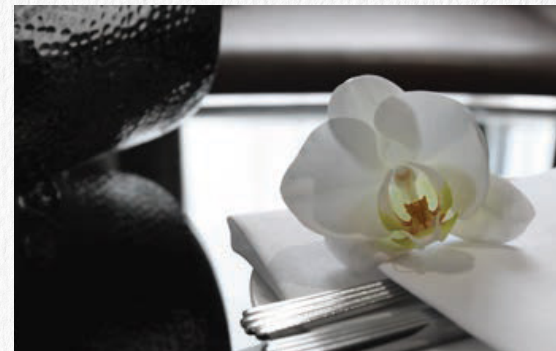
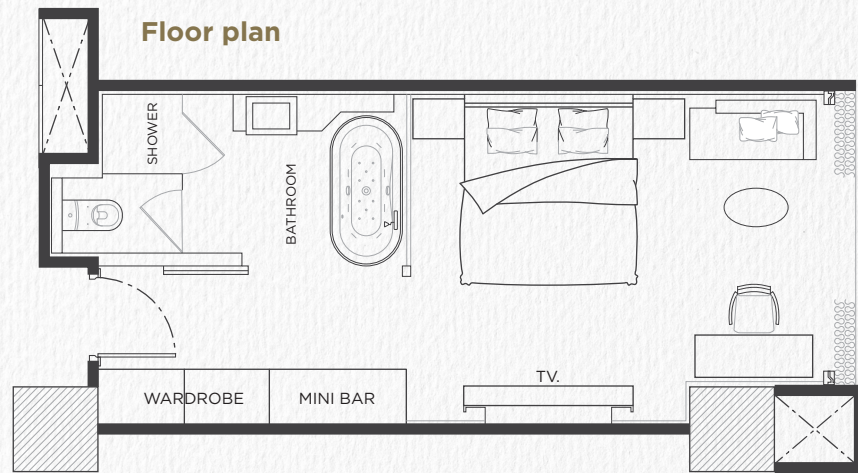


### Premium Corner

Our spacious Corner rooms provide that extra level of comfort to complement its sleek design. The large working desk with USB media hub will keep you connected, whilst the large private soaking tub will let you relax and reflect on another enriching day in one of the world's great cities.





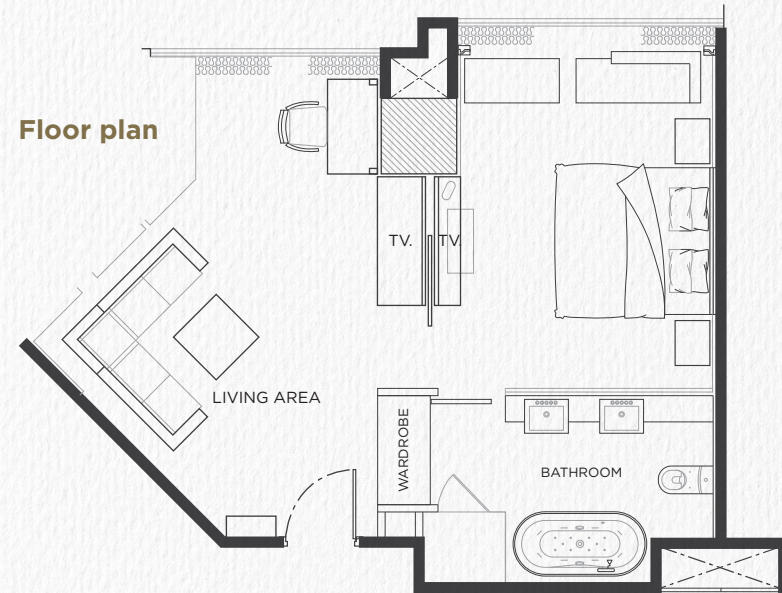


### **Premium Club Room**

Perched on the top floors of the hotel, our Premier Club Rooms provide sophisticated comfort, amazing views of the city skyline and personalized services from the charismatic Club Floor team. Enjoy unlimited access to the Club Floor Lounge with panoramic views, gourmet breakfasts & evening cocktails, private meeting rooms and bespoke services.







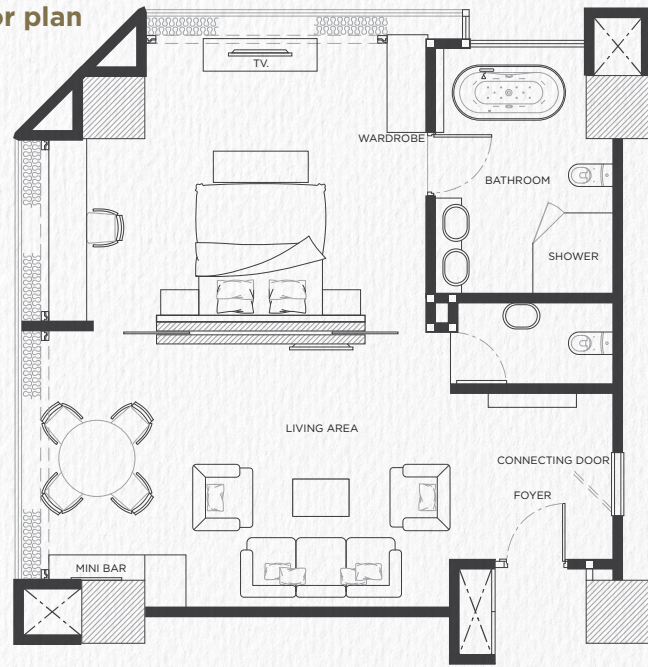
### Deluxe Suite

Comfortably spacious with a contemporary design, our bright Deluxe Suites provide an impeccable environment for your enjoyment. The luxurious private bedroom and bathroom adjoins a large seating area with a cosy sofa and working desk. Two smart TVs adorn each room and the desk provides a USB media hub with the opportunity to gaze out into the Bangkok skyline as you work.





**Floor plan**

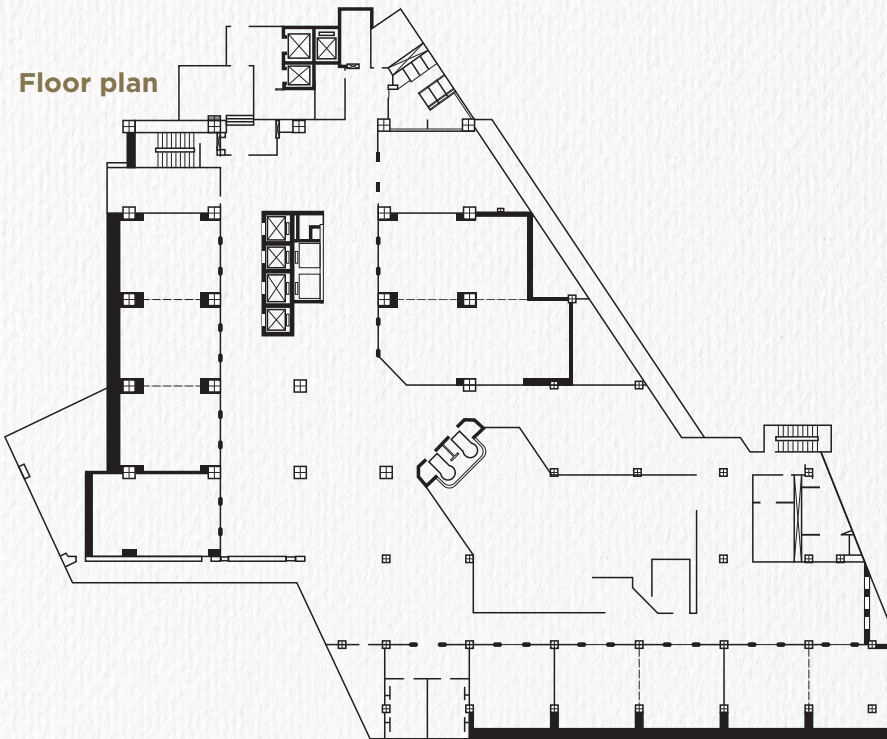


### **Executive Suite**

With its unparalleled luxury, generous living spaces and the sparkle of natural light, the spectacular Executive Suites guarantees the ideal surroundings for even the most discerning business or leisure traveller. Find tranquility/peace in the plush king sized bed lined with crisp linens or take a plunge in the large soaker tub as you gaze out the window. The finely appointed living room provides comfortable furnishings, dining table and a large bar area adding to the abundance of opportunities of your stay.







### Meeting & Events 3<sup>rd</sup> Floor Sukhumvit Rooms

Complete with state-of-the-art facilities and break-out options, a stylish centralized refreshment area for networking or breaks between sessions, they are an ideal location for hosting important meetings or elegant exhibitions.





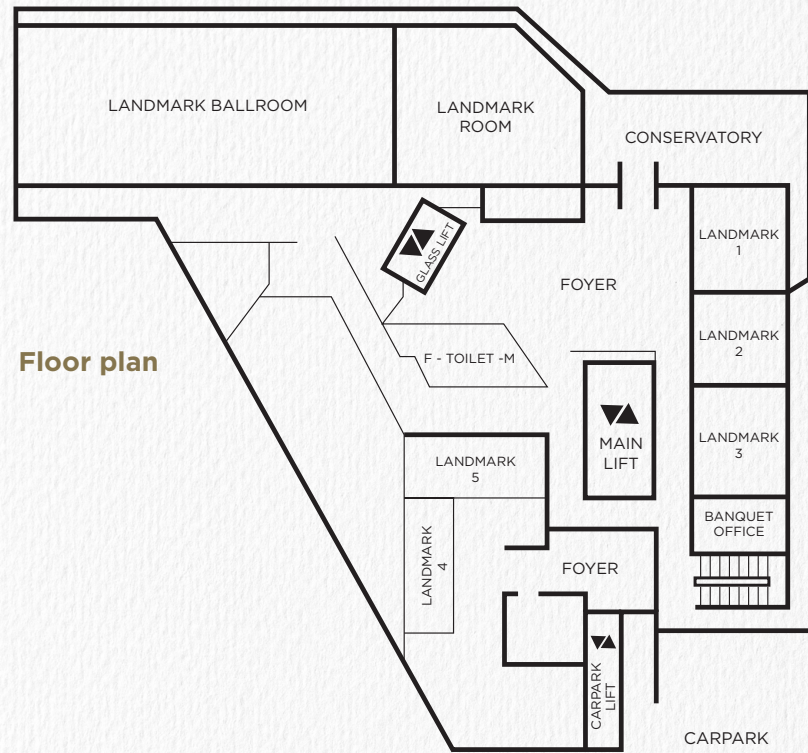


### Meeting & Events 3<sup>rd</sup> Floor Sukhumvit Rooms

Meeting and events not only look great but also function perfectly in our spectacular Sukhumvit meeting rooms. Ultra modern in their design, the new event areas on LEVEL 3 consist of 11 rooms that are both flexible and fashionable.







### Meeting & Events 7<sup>th</sup> Floor Landmark Rooms

Elegantly styled and beautifully presented the Landmark Ballroom is the perfect venue for premier events. Capable of hosting up to 1,200 people, it is ideal for Gala Dinners, Wedding Receptions, International Conventions and timely Product Launches. Accompanied by the Landmark Rooms 1-5 provides you multi-purpose options for to ensure a memorable event.







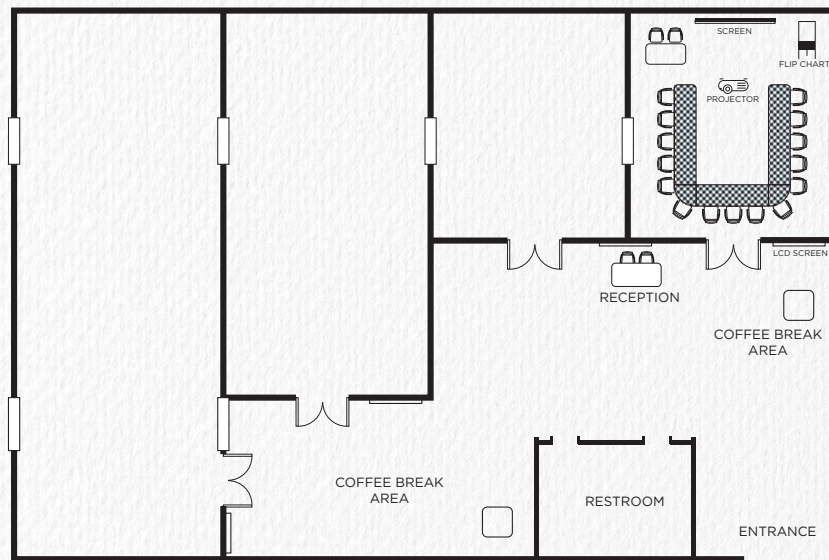
### Meeting & Events 7<sup>th</sup> Floor Landmark Rooms

Featuring large, conservatory-style windows for a bright and airy atmosphere, The Conservatory Room is breathtakingly different yet smart and always popular.





## Floor plan



## Meeting & Events 9<sup>th</sup> Floor Krunghthep Rooms

Modern in style with natural day light presented, our Krunghthe Meeting Rooms are ideal for premier events, seminars, company meetings and product launches. Facilities include the latest audiovisual and support equipment, plus five-star service and the expertise of our experience staff.







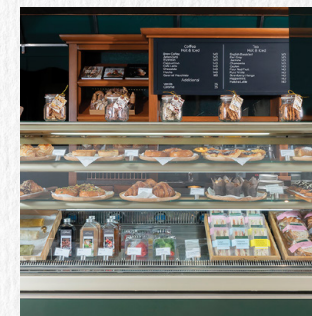
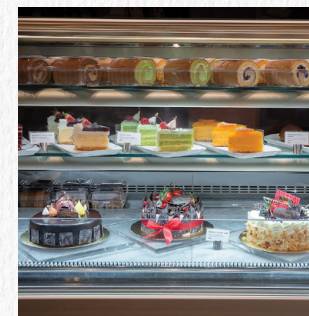
**Rib Room & Bar Steakhouse**  
Located on 31<sup>st</sup> floor



**The Bar**  
Located on 31<sup>st</sup> floor



**Sui Sian Chinese Restaurant**  
Located on 10<sup>th</sup> floor



**Landmark Bakery & Café**  
Located at Ground Level



# THE LANDMARK TERRACE



**The Landmark Terrace**  
Located at Ground Level

# Greenhouse



**Greenhouse**  
Located at Ground Level

# RENDEZVOUS LOUNGE & BAR



**Rendezvous Lounge & Bar**  
Located at Lobby Level

# ATRIUM

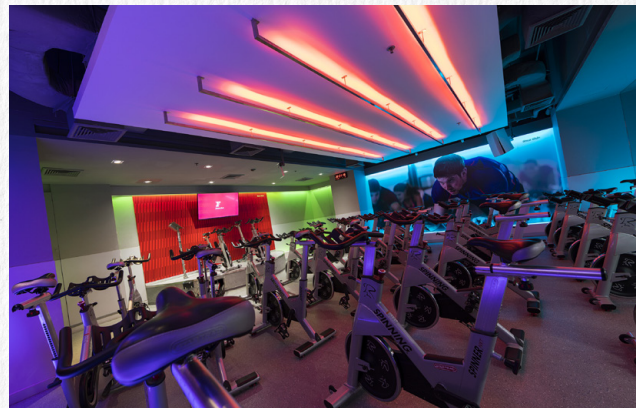


**Atrium International Buffet**  
Located at Lobby Level





**Viva Jiva Spa**  
Located on 9<sup>th</sup> floor



**Fitness First Platinum**  
Located on 4<sup>th</sup> floor

## CONTACT DETAILS

138 Sukhumvit Road, Bangkok, 10110 Thailand T: +66 2 254 0404 F: +66 2 253 4259  
E: email@landmarkbangkok.com W: www.landmarkbangkok.com



NANA Station  
Exit 2

## LOCAL ATTRACTIONS

MBK Center  
www.mbk-center.co.th

Siam Paragon  
www.siamparagon.co.th

Central Chidlom  
www.central.co.th

Terminal 21 Shopping Mall  
www.terminal21.co.th

Emporium Department Store  
www.emporium.co.th

EmQuartier Department Store  
www.emquartier.co.th

## FOLLOW US



thelandmarkbangkok



@thelandmarkbangkok



The Landmark Bangkok Official



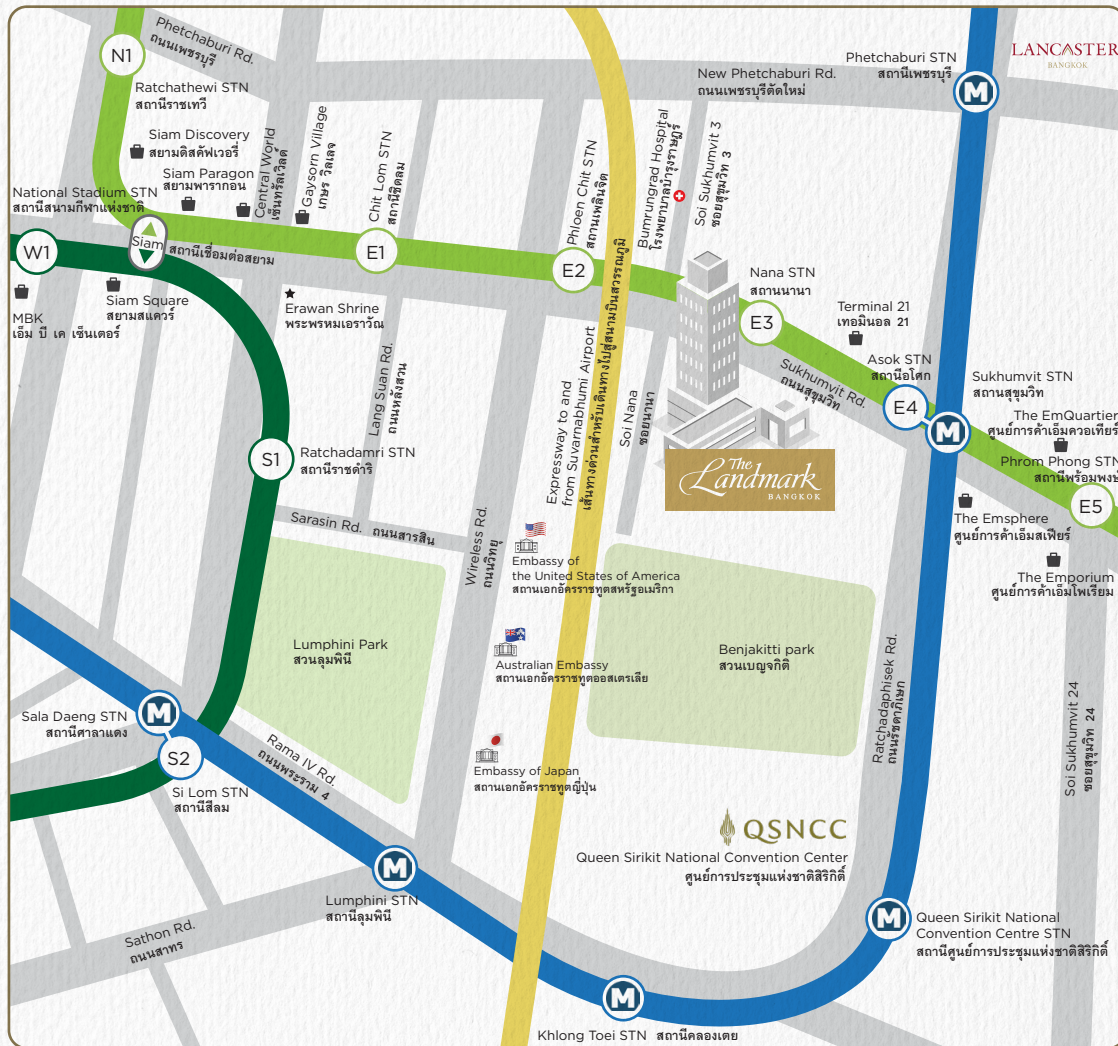
The Landmark Bangkok Hotel



thelandmarkbkk







## LEGEND / สัญลักษณ์



BTS Skytrain

### Silom Line

เส้นทางรถไฟฟ้ามหานคร สายสีลม

### Sukhumvit Line

เส้นทางรถไฟฟ้ามหานคร สายสุขุมวิท



Mass Rapid Transit Route



Interchange with Sukhumvit Line and Silom Line

สถานีเชื่อมต่อเส้นทางรถไฟฟ้ามหานคร สายสุขุมวิทกับสายสีลม



Interchange with Mass Rapid Transit (MRT)

จุดเปลี่ยนเส้นทางไปรถไฟฟ้ามหานคร

Expressway to and from Suvarnabhumi Airport  
เส้นทางด่วนสำหรับเดินทางไปสู่สนามบินสุวรรณภูมิ



Embassy  
สถานเอกอัครราชทูต



Shopping Center  
ศูนย์การค้า

## Landmark Lancaster HOTEL GROUP



138 Sukhumvit Road, Bangkok, 10110 Thailand  
T: +66 2 254 0404 F: +66 2 253 4259 E: email@landmarkbangkok.com  
W: www.landmarkbangkok.com



1777 New Phetchaburi Road, Bangkok, 10310 Thailand  
T: +66 2 262 8000 F: +66 2 262 8010 E: info@lancasterbangkok.com  
W: www.lancasterbangkok.com



222 Marylebone Road, London NW1 6JQ, UK  
T: +44 20 7631 8000 F: +44 20 7631 8080  
E: reservations@thelandmark.co.uk W: www.landmarklondon.co.uk



Lancaster Terrace, London W2 2TY, UK  
T: +44 20 7551 6000 F: +44 20 7724 3191  
E: book@royallancaster.com W: www.royallancaster.com



Richmond Way, London W14 0AX, UK  
T: +44 20 8008 6600 F: +44 20 8008 6650  
E: bookit@k-west.co.uk W: www.k-west.co.uk



15 Basil Street, Knightsbridge, London SW3 1AX, UK  
T: +44 20 7123 6309  
E: book@15basilstreet.com W: www.15basilstreet.com